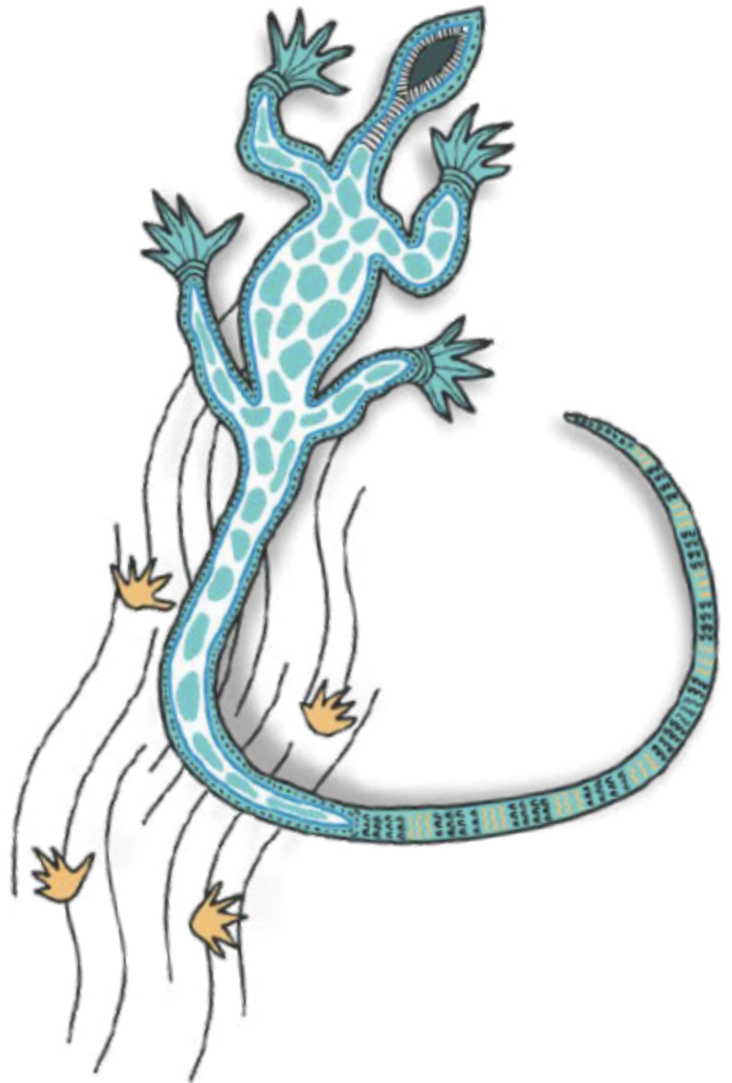




Certificate of Completion

My Career Insights
Sample Candidate

CEAV Enterprise Centre
January 2025



Well done on completing your Morrisby profile.

Participation in an unpacking interview will step you through some key points in relation to your profile.

You can access your interactive results via the online portal at www.morrisby.com and we recommend that you do this.

Via this online portal you can download a more comprehensive PDF report than this summary as well as share your results with others.

The online presentation provides the ability to customise your results so they best reflect who you are and your preferences. If you have had an unpacking interview the summary notes from this are also available online and from your comprehensive PDF report.



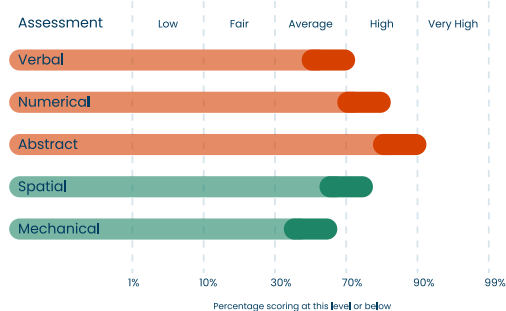
Department
of Education



Your career insight results

Aptitudes

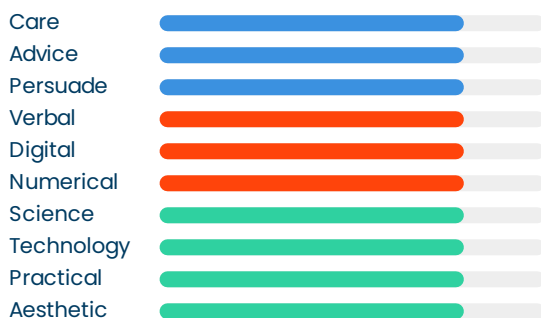
Completed 29/01/2019



Your high abstract result, lower numerical and verbal results suggest that you might prefer working with real objects, diagrams, plans and quantitative analysis. These are useful skills for engineering, technology and some commercial areas. You may prefer learning from experiments, charts, models, videos and your own experiences, rather than from books or lectures. These tests do not measure artistic capability, but those with this pattern are often talented at design.

You could look at careers which match this pattern, such as engineering of many types, science and laboratory work, surveying, construction, agriculture, manufacturing, technical design, IT and many commercial careers such as banking, insurance, finance and so on.

Career Interests



You appear equally interested in most of the career areas. It is strongly recommended that you retake the Aspirations Questionnaire, preferably giving a little more thought to your answers. The link is on the right of the 'Interests' page of your Profile.

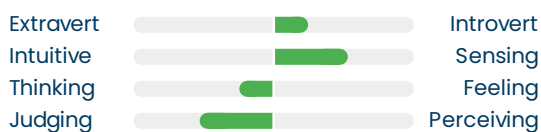
You show a strong interest for all the specific 'Specialist Career Interest' careers (musician, professional sports person, performing artist, linguist, artist or designer). It is very unusual to be interested in such a range of careers. It might be possible to build a career as one or more of these but you are likely to need to focus on more specific career options. Try to gather as much experience and knowledge of these careers as you can. Talent, commitment, hard work and tenacity are all vital – as well as a good dollop of luck will also help!

Specialist Interests



Personality

Type: xSTJ - Pragmatist



- ✓ Factual
- ✓ Analytical
- ✓ Organised
- ✓ Practical
- ✓ Structured
- ✓ Responsible

Organised, trustworthy, sincere, analytical, reserved, realistic and systematic. Appreciates what needs to be achieved and works out how best to achieve it.

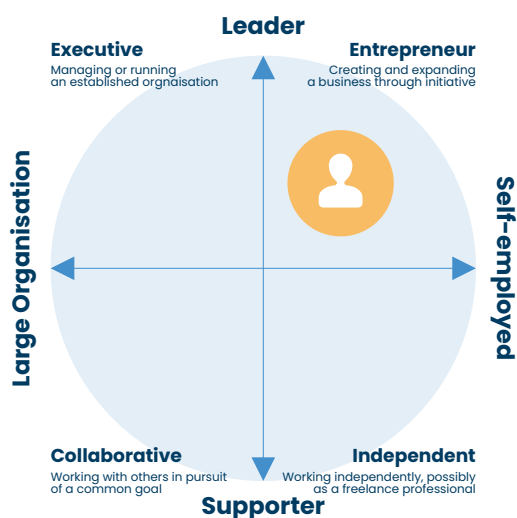
The most strongly defined aspect of your results is that you prefer a well ordered and structured lifestyle. Whilst you enjoy occasional surprises, you prefer the important things in life to be well thought through, organised and as definite as possible. Some things need to be planned well in advance to ensure you get the most out of them.

Also of importance is your preference for taking a down-to-earth, realistic approach. You like to base your opinions on your experiences and observations. Whilst imagination and creativity are important to you, they need to be grounded and applicable to the real world.

It appears that when making decisions you prefer to adopt an analytical approach, and work out the most logical solution to a problem. Whilst you accept that some decisions are based on feelings rather than facts, you are keen to find the technically correct solution even if it will not be received well by others. Your results show no great preference towards either extraversion or introversion. Happy to be in the company of others but not dependent on them. You can gain motivation from both the world around you but are also content with your own company.

Work Style

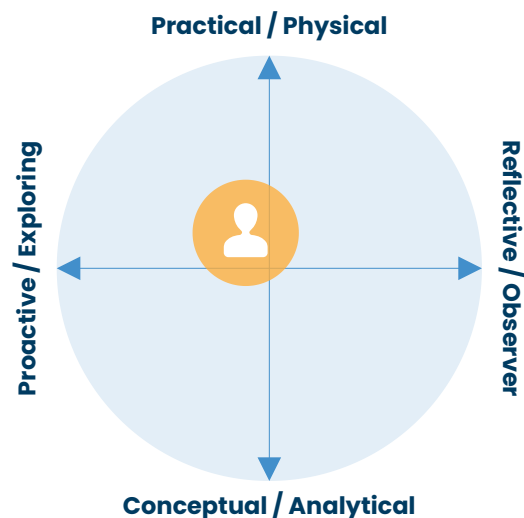
Your preferred role



- ✓ Ambitious
- ✓ Determined
- ✓ Creative
- ✓ Innovative
- ✓ Executive
- ✓ Leader

Learning Style

Your preference



- ✓ Down-to-earth
- ✓ Experiential

Your suggestions and favourites

The suggestions reflect your chosen academic level of Adv. Diploma/Ass. Degree – Degree. You can explore many further suggestions at various levels of qualification by visiting your Morrisby account. Careers and subjects favourites in your Morrisby Online Profile will be highlighted with a heart icon.

Careers

- ♡ Radiographer
- ♡ Medical Scientist
- ♡ Forensic Computer Analyst
- ♡ Business Analyst
- ♡ Air Traffic Controller
- ♡ Hydrographic Surveyor
- ♡ Sports Scientist
- ♡ Geneticist
- ♥ Pharmacist
- ♥ Optometrist
- ♥ Pharmacologist
- ♥ Clinical Psychologist

16+ Subjects

- ♡ Chemistry
- ♥ Chemistry (A Level)
- ♡ Biology
- ♡ General Mathematics
- ♡ Mathematical Methods
- ♡ Physics
- ♡ Specialist Maths
- ♥ Physics (A Level)
- ♥ Mathematics (A Level)
- ♡ Theatre Studies
- ♡ Drama
- ♥ Psychology (A Level)

Post School Subjects

- ♥ Pharmacy and pharmaceutical science
- ♡ Hospital sciences
- ♥ Medicine
- ♡ Biology
- ♥ Optometry and eye-care
- ♡ Health and medical sciences
- ♡ Biochemistry and biotechnology
- ♡ Cell, molecular & microbiology
- ♡ Chemistry
- ♥ Psychology
- ♡ Architecture
- ♡ Advertising and public relations

Notes

During your unpacking interview, use this section to record any additional careers or subjects you are interested in, or any other relevant notes.

Careers

Subjects

Other

Where next?

Accessing your Morrisby Account

Your Morrisby account contains vastly more information about you, your options, and the pathways and destinations available to you.

- Go to **morrisby.com** and login using the details created at registration.
- Click the forgotten password link if you can't remember your login details or ask career staff at school to provide you with a recovery code.
- Once logged in, use the Settings Cog to edit any personal details and add your personal email address as a secondary email. This ensures that you will be able to retain access once you leave school.
- From your main account page, you can also invite your parents or guardian to access to your account. All you need is their email address.
- Upload your report to your My Career Portfolio.
- You can retake the assessments with help from careers staff at school, add your achievements and preferences, and revisit the portal to explore your options at any time.

You have access to your Morrisby account for life as long as you login at least once every 5 years. Your Morrisby account is an excellent career education resource during subject selection, pathway counselling, and during any school transition.



Visit **morrisby.com**